

## ISC General Meeting – Minutes for September 17, 2013

Guest Speaker – Dr. Christopher McGinley, Superintendent of LMSD

In addition to the information provided in the accompanying Power Point presentation, the following details were shared and/or discussed:

- Questions arose about Keystone (high school content area exams) and PSSA tests. LMSD is concerned with the amount of instructional time lost because of PSSA testing in grades 3,4,5,6,7 and 8. Keystone State Educational Coalition (<http://keystonestateeducationcoalition.blogspot.com/>) is a non-partisan education advocacy group working on testing and other issues.
- iPads continue to be utilized in kindergarten classrooms and have been introduced in first grade classes this year because of success of program in kindergarten classrooms.
- Grade 6 Social Studies program is now using technology based program (Chrome Book has replaced textbook). Parents need to and are encouraged to “opt into” the program.
- Additional information on enrollment figures and projections is available on the LMSD website.
- Every six years the district is required to submit a strategic/comprehensive plan to the state. Last one was completed in 2009. Conversation about status and goals of district will be undertaken in order to draft a new plan. Questions that will be addressed include possible issues such as: What should a LMSD graduate look like? What are the appropriate uses of technology in the district? Working with outside consultants, LMSD expects to have a timeline and goals set by December, meetings will begin in January to address the 4 or 5 issues identified as critical to the strategic planning process and the plan will be written in April and May.

# 2013- 2014



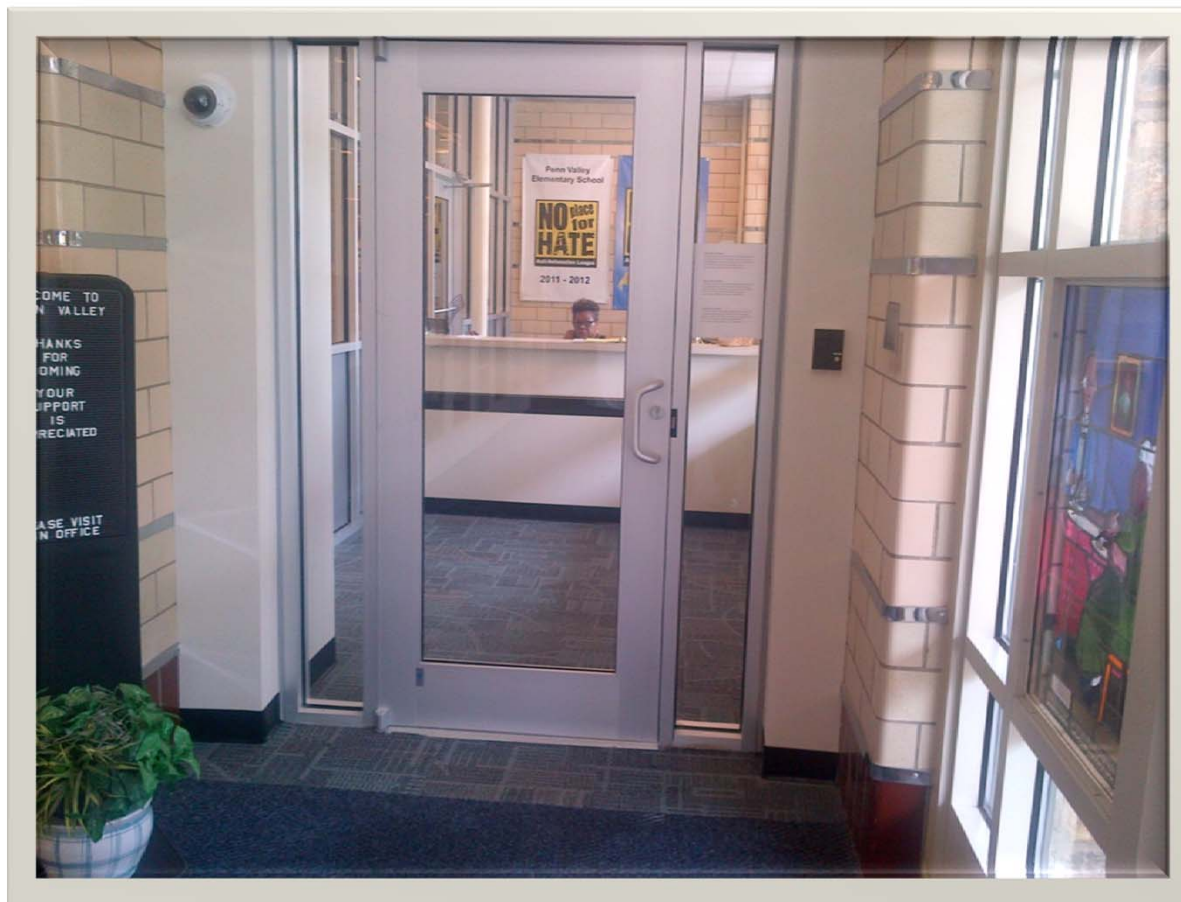
- Topics
  - School Safety
  - Enrollment Growth
  - New Staff
  - New Central Office Organization
  - The Status of the Elementary School Schedules
  - Comprehensive Planning Process

# School Safety



- New Entry Procedures
  - Photo ID Required
- Additional Security Cameras
- Office Relocations
- Emergency Relocation Sites Established
- Additional and More Realistic Drills

# Penn Valley Elementary – Secured Entrance

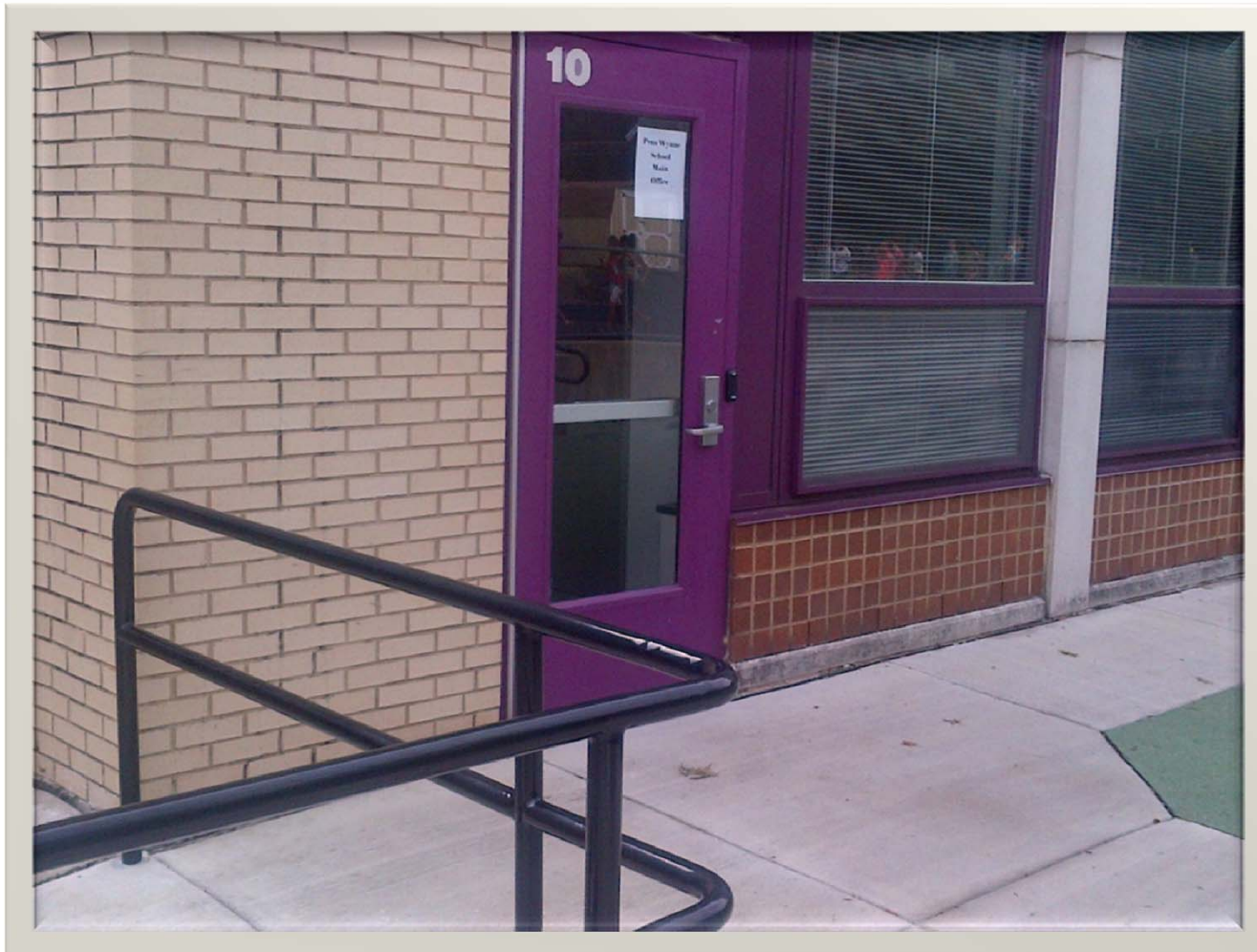


# Penn Valley Elementary – Secured Entrance





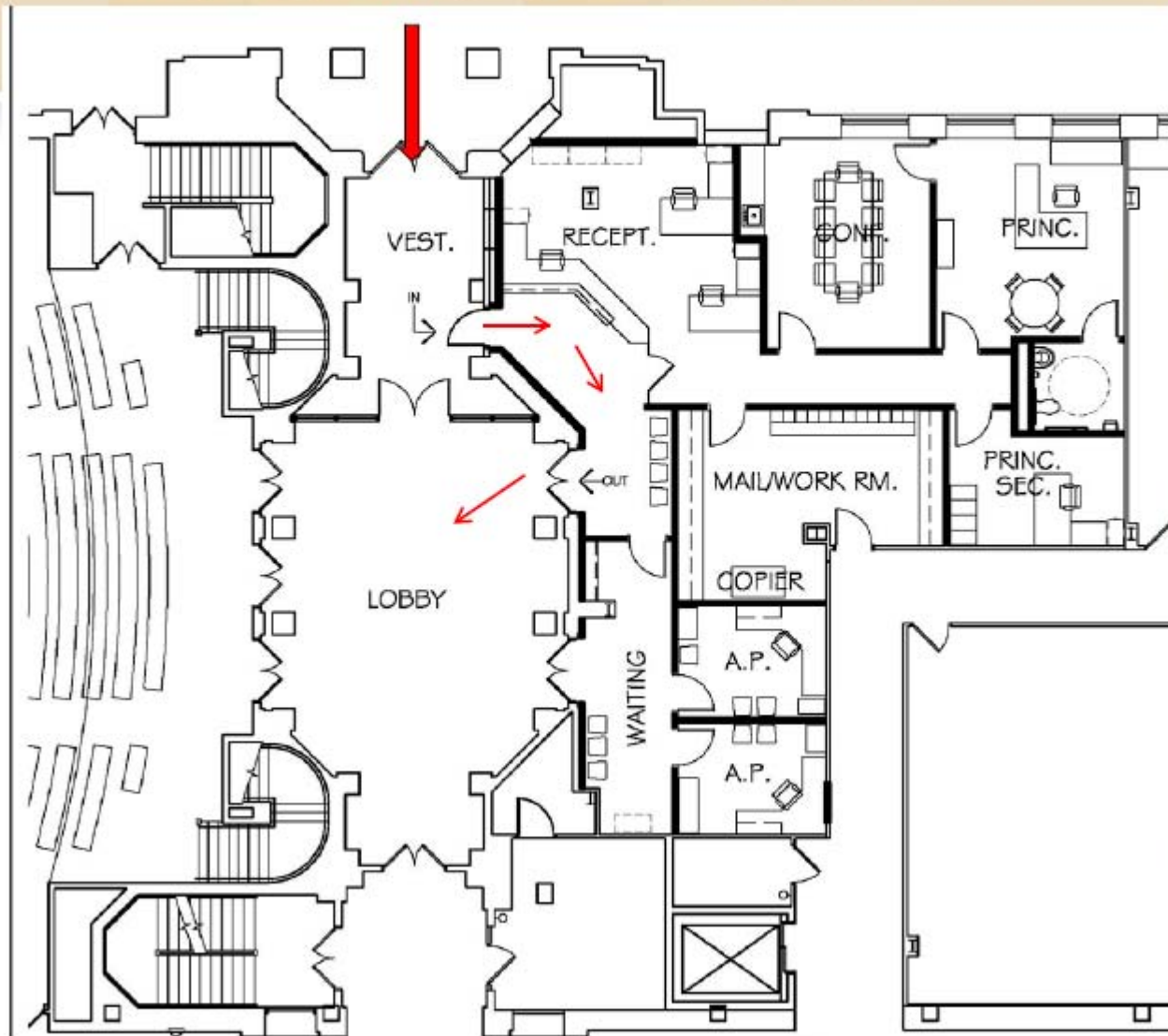
# Penn Wynne Elementary



# Penn Wynne Elementary – Secured Entrance

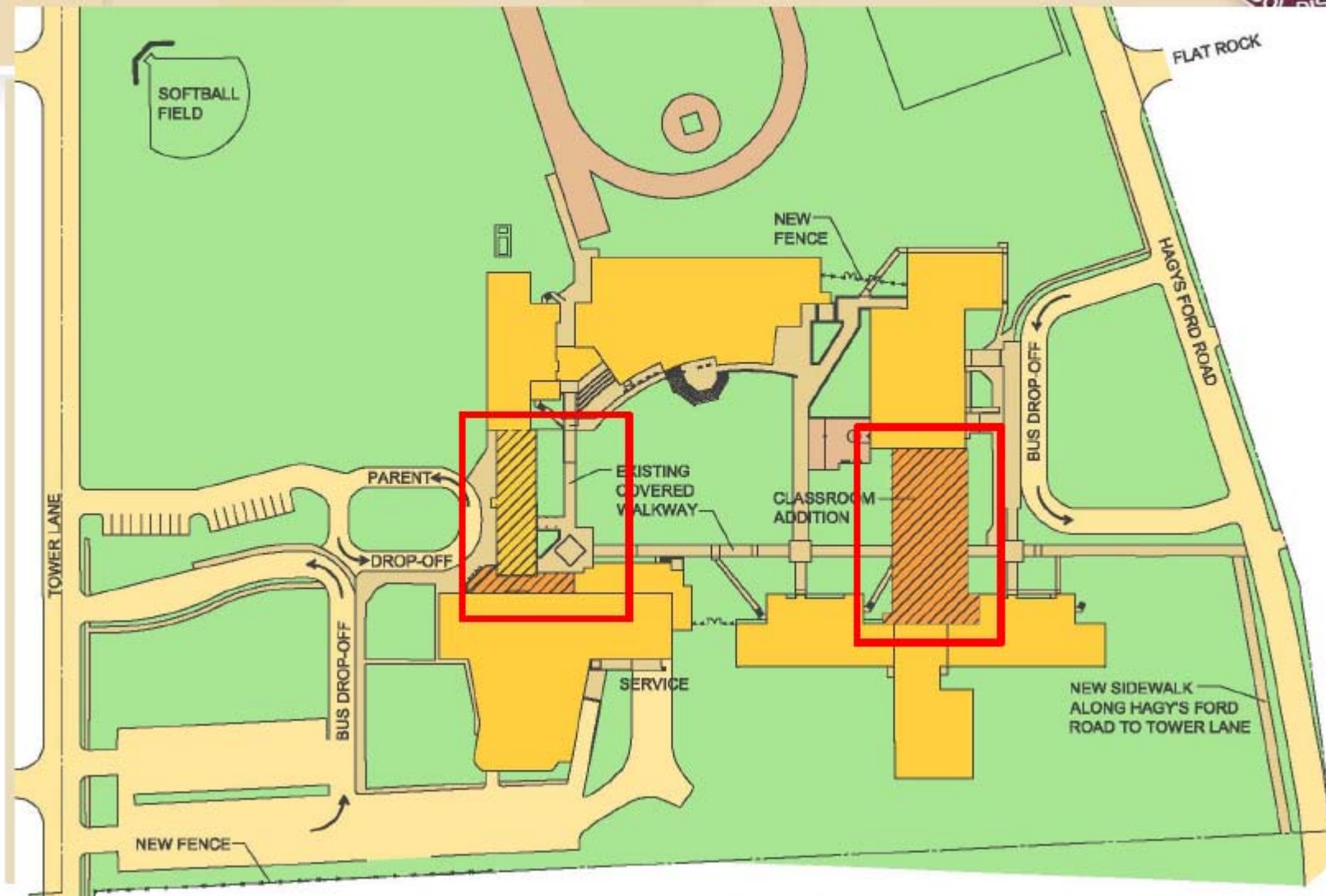


# BC Office Relocation





# Welsh Valley MS



# Enrollment Growth

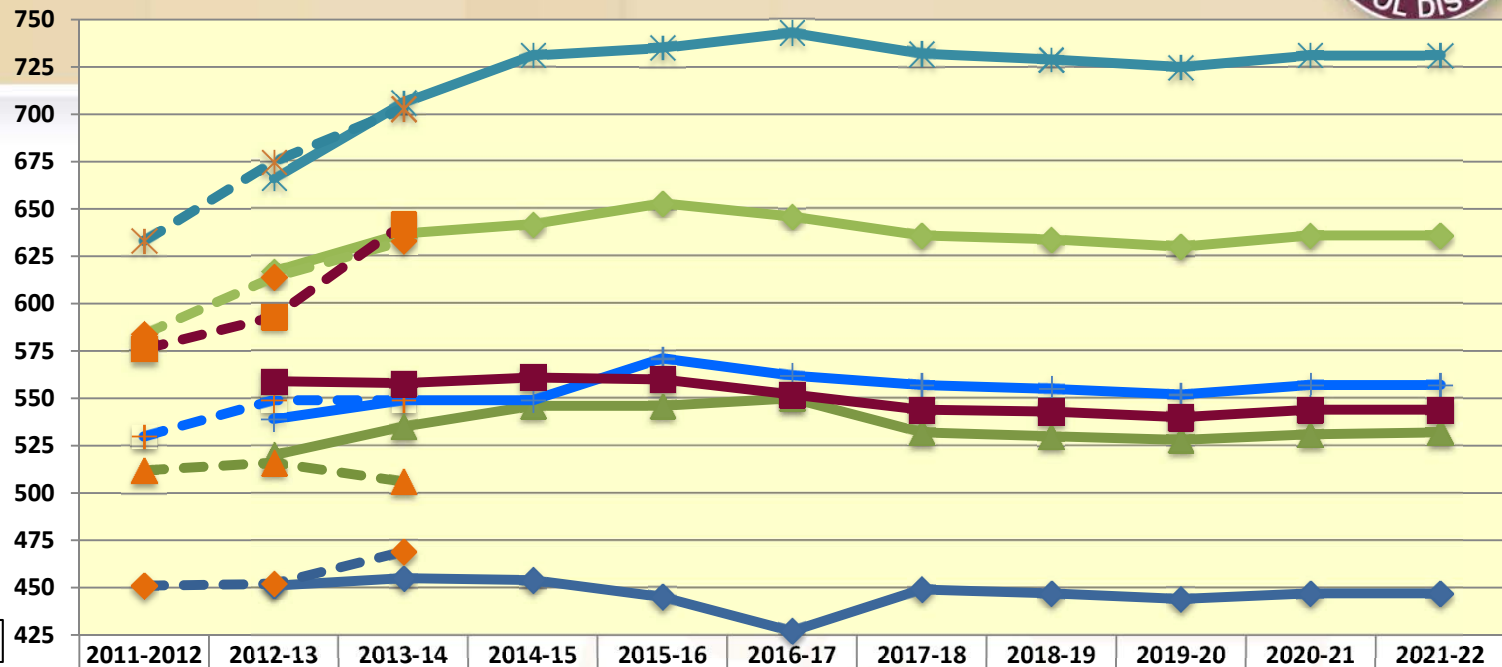


- Portable Classrooms at Gladwyne and Welsh Valley
- Internal Construction at Bala Cynwyd
- Anticipated Construction at Gladwyne, Penn Valley and Welsh Valley
- In the Process of Planning for Increased Enrollment of the High Schools

# Elementary School Projections



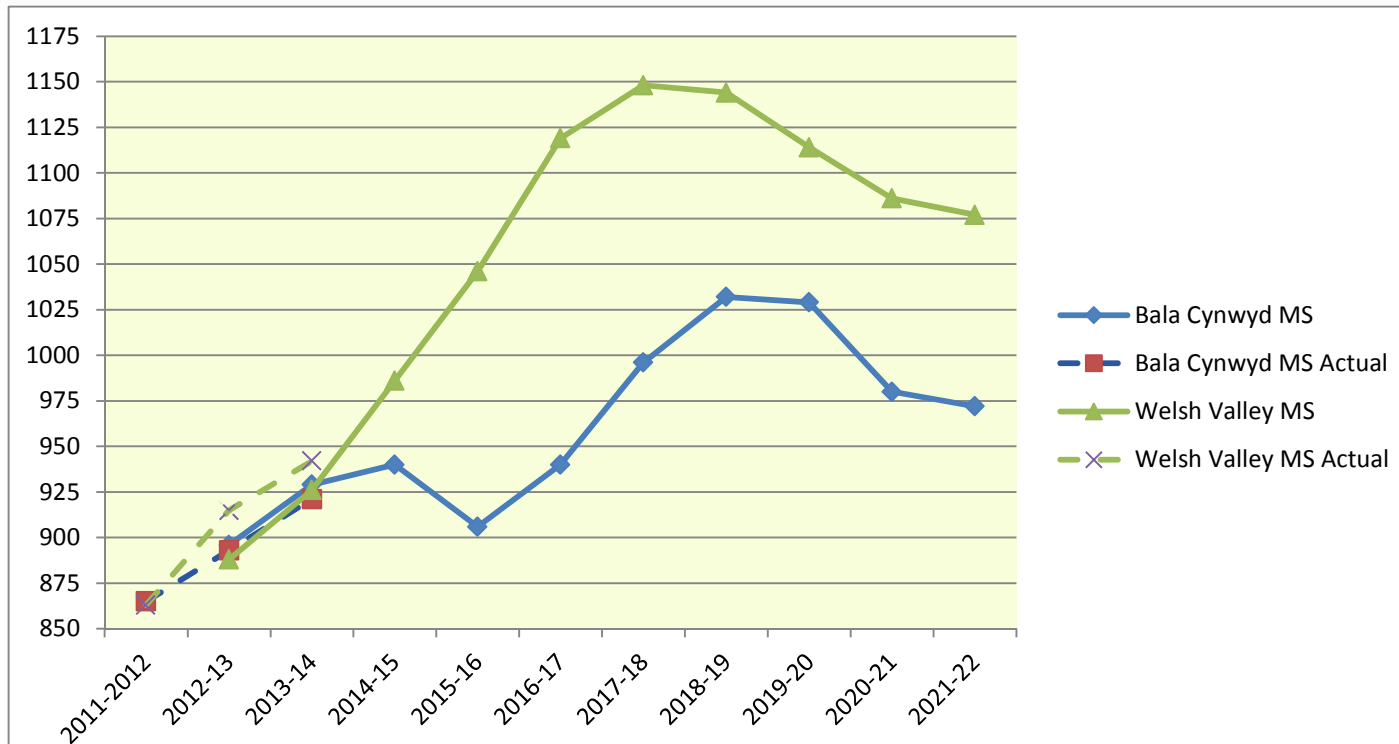
13-14 SY  
Enrollment  
Data as of  
9-12-13



DeJong-Healy Projections

	2011-2012	2012-13	2013-14	2014-15	2015-16	2016-17	2017-18	2018-19	2019-20	2020-21	2021-22
Belmont Hills ES		451	455	454	445	427	449	447	444	447	447
Belmont Hills Actual	451	452	469								
Cynwyd ES		520	535	546	546	550	532	530	528	531	532
Cynwyd ES Actual	512	516	506								
Gladwyne ES		666	706	731	735	743	732	729	725	731	731
Gladwyne ES Actual	633	675	703								
Merion ES		539	549	549	571	562	557	555	552	557	557
Merion ES Actual	530	549	549								
Penn Valley ES		617	637	642	653	646	636	634	630	636	636
Penn Valley ES Actual	584	614	633								
Penn Wynne ES		559	558	561	560	552	544	543	540	544	544
Penn Wynne ES Actual	576	593	642								

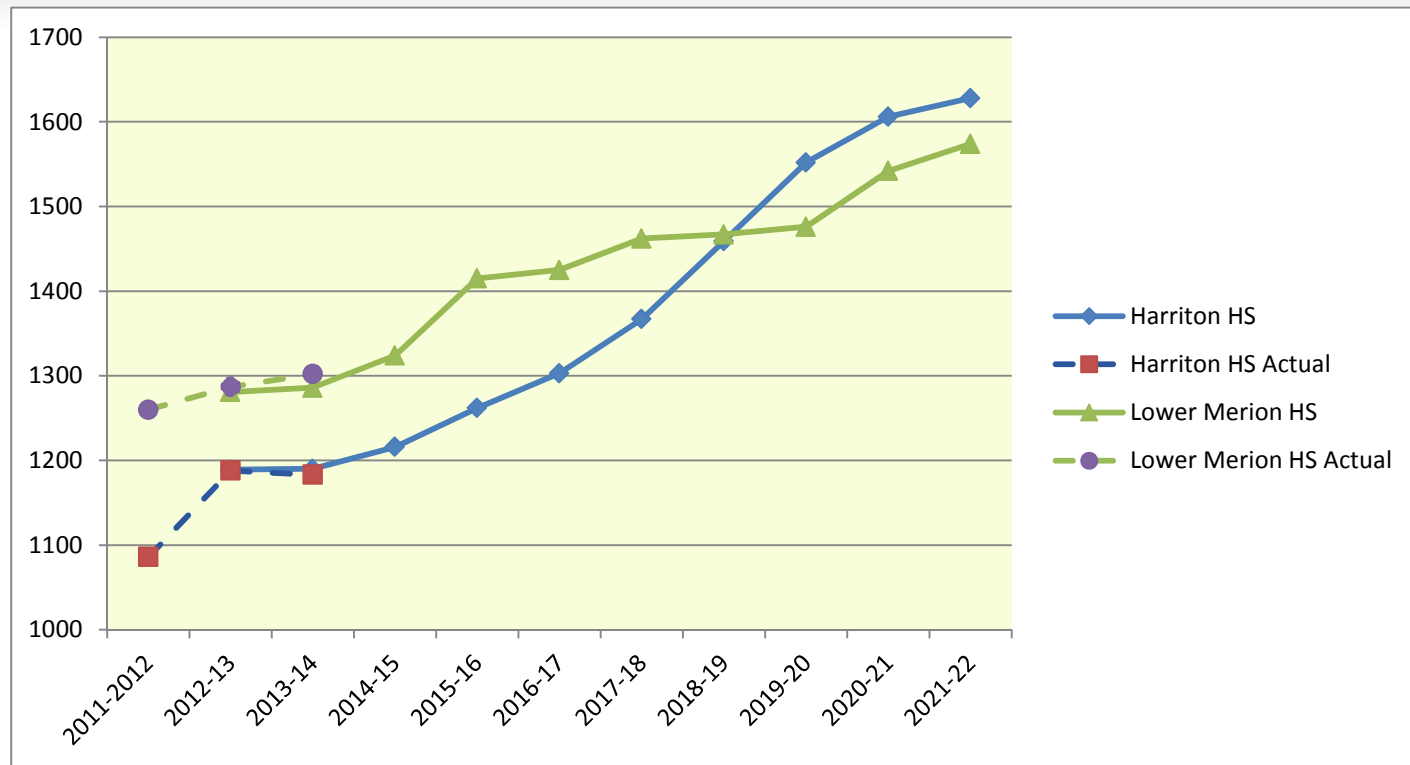
# Middle School Projections



De-Jong Healy Projections	2011-2012	2012-13	2013-14	2014-15	2015-16	2016-17	2017-18	2018-19	2019-20	2020-21	2021-22
Bala Cynwyd MS		896	929	940	906	940	996	1,032	1,029	980	972
Bala Cynwyd MS Actual	865	893	921								
Welsh Valley MS		888	926	986	1,046	1,119	1,148	1,144	1,114	1,086	1,077
Welsh Valley MS Actual	863	915	942								



# High School Enrollment Projections



De-Jong Healy Projections	2011-2012	2012-13	2013-14	2014-15	2015-16	2016-17	2017-18	2018-19	2019-20	2020-21	2021-22
Harriton HS		1,189	1,190	1,216	1,262	1,303	1,367	1,459	1,552	1,606	1,628
Harriton HS Actual	1086	1188	1183								
Lower Merion HS		1,281	1,286	1,324	1,415	1,425	1,462	1,467	1,476	1,542	1,574
Lower Merion HS Actual	1260	1287	1302								

# Enrollment Projections Based on Expanded Choice Options and Bala Cynwyd Cohort that attends Harriton HS



## Harriton High School

	2014-15	2015-16	2016-17	2017-18	2018-19	2019-20	2020-21	2021-22
DeJong (Original)	1,216	1,262	1,303	1,367	1,459	1,552	1,606	1,628
DeJong (No Choice)	1,339	1,388	1,435	1,506	1,607	1,710	1,770	1,794
DeJong (No Choice & BC Adj)	1,354	1,420	1,483	1,570	1,672	1,776	1,839	1,864
60/40*	1,213	1,255	1,291	1,348	1,436	1,525	1,579	1,600
50/50*	1,201	1,230	1,251	1,293	1,377	1,462	1,515	1,535
40/60*	1,189	1,204	1,210	1,238	1,317	1,399	1,450	1,469

## Lower Merion High School

	2014-15	2015-16	2016-17	2017-18	2018-19	2019-20	2020-21	2021-22
DeJong (Original)	1,324	1,415	1,425	1,462	1,467	1,476	1,542	1,574
DeJong (No Choice)	1,201	1,289	1,293	1,323	1,319	1,318	1,378	1,408
DeJong (No Choice & BC Adj)	1,186	1,257	1,245	1,259	1,254	1,252	1,309	1,338
60/40*	1,327	1,422	1,437	1,481	1,490	1,503	1,569	1,602
50/50*	1,339	1,447	1,477	1,536	1,550	1,566	1,634	1,668
40/60*	1,351	1,473	1,518	1,591	1,609	1,629	1,698	1,733

# Staffing and Organizational Changes



- Elementary Assistant Principals
  - Gladwyne: Full Time
  - Penn Valley and Penn Wynne: Shared Position
- New Teacher's and Other Professionals
  - 52 New Professional Staff
- Changes in Central Office
  - New Assistant Superintendent: Dr. Marseille
  - New Elementary Director: Dr. Doria
  - New Senior Director of Policy
  - Personnel and School Programs: Ms. Shafer

# The Status of the Elementary School Schedules



- This Year
  - Starting Time Moved to 9:00 Am
  - Morning Meeting Time is Limited
  - WIN Periods Established Where Possible
- Looking Forward
  - Establish a Review Committee
    - Two parents from each school
    - Two teachers from each school
    - Administrators
  - Meet from October through December
  - Bring Recommendations to the Curriculum Committee of the Board in January



# Strategic Planning

